

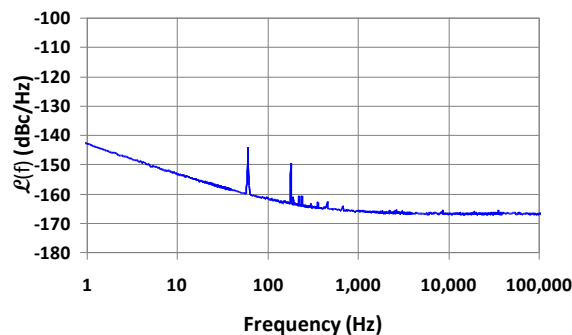


1 - 50 MHz

LOW NOISE DISTRIBUTION AMPLIFIER

The LNDA-15RM is an economical low noise distribution and isolation amplifier. This instrument may contain up to three amplifier modules. Each module accepts one input signal in the range of 1 to 50 MHz and provides five isolated output copies of the input signal with unity gain. All outputs are AC coupled and the grounds are DC isolated to reduce the effect of ground loops. The channel-to-channel and reverse isolation are greater than 100dB which provides ample protection for the signal source and downstream users. Signal monitors are included on every output and an alarm is generated if any of the signals drop below a predetermined threshold. The monitor LEDs are visible from the front panel. The instrument operates from AC power and the option for DC power operation is available for some models. On the units with DC power operation an open collector alarm is available on the back panel connector. The switch from AC to DC power supply is automatic and glitch free ensuring uninterrupted continuous operation. The LNDA-15RM comes in a 1U high, 19" rack-mount enclosure.

LNDA-15RM Phase Noise Plot



FEATURES

- 1 - 50 MHz
- Unity gain
- Low VSWR
- Isolation: 100 dB
- High output: +17 dBm
- Low phase noise: -143 dBc/Hz @ 1 Hz
-165 dBc/Hz @ 10 kHz
- Low distortion: -45 dBc
- Low temp. coefficient: 3 ps/°C

APPLICATIONS

- Calibration laboratories
- Engineering facilities
- Laboratory frequency distribution
- Production and testing facilities

FRONT PANEL

- AC and DC Power Monitor LEDs.
- RF Signal Monitor LEDs.

BACK PANEL

- SMA Input connectors
- SMA Output connectors
- AC and DC power connectors

SPECIFICATIONS

PARAMETER	CONDITIONS	MIN	TYP	MAX	UNITS
Input level	1 dB compression	17	18	-	dBm
Bandwidth	+/- 1 dB	1-50	0.5-65	-	MHz
Gain	@ 5 MHz	-	0	+/- 0.5	dB
Impedance	input output	- -	50 50	- -	Ohms
Return loss	input (S11) output (S22)	- -	-30 -30	-25 -25	dB
Distortion	+13 dBm +17 dBm	- -	-45 -40	-40 -35	dBc
Isolation	Out-out Out-in	95 100	100 105	- -	dB
Phase noise	1 Hz 10 Hz 1 kHz 10 kHz	- - - -	-143 -153 -162 -165	-140 -150 -159 -162	dBc/Hz
Temp. Delay Coefficient	0 - 50 °C	-	3	5	ps/°C

POWER REQUIREMENTS

- AC Operation: 100-240 VAC, 47-63Hz.
- DC Operation: 9-36 VDC

LNDA-15RM SELECTION GUIDE

Product Name	Number of Inputs	Number of Outputs	Autoswitch	AC Voltage Operation	DC Voltage Operation
LNDA-15RM-B	3	15		√	
LNDA-15RM-B1	1	10		√	
LNDA-15RM-B3	1	15		√	
LNDA-15RM-C	3	15		√	√
LNDA-15RM-C1	1	10		√	√
LNDA-15RM-C3	1	15		√	√
LNDA-15RM-S*	2	10	√	√	√

*This model takes two RF inputs, Input 1 & 2. In the event that Input 1 fails the unit will automatically select Input 2